

Now you can pay as you go

Autodesk software rental plans

It's never been easier to get the Autodesk® software you want with a variety of purchase options to meet the unique needs of your business. Software rental plans allow you to pay as you go for monthly, quarterly or annual access to Autodesk® Design and Creation Suites software and select software products.



More choices

Now you have more choices when you buy Autodesk software

You can choose a perpetual license or a rental plan depending on what works best for you



Perpetual license

A perpetual license gives you ongoing access to Autodesk software; however, upgrades must be purchased separately to keep your software up to date and support is not included.



Perpetual license + Autodesk Subscription

A perpetual license with Autodesk® Subscription gives you basic support, access to the latest software and product enhancements, and in some cases, access to select cloud services.



Software rental plan

Software rental plans let you pay as you go for access to Autodesk software and includes basic support, access to the latest software and product enhancements, and in some cases, access to select cloud services.

More access

Choose which rental plan is right for you based on your budget and the type of work you do

Regardless of which rental plan you choose, you'll get access to the same full, commercial version of the software as you would with a perpetual license. You'll also get access to the latest releases so you can keep your software up to date. The cost of rental plans varies by product and the length of the plan that you choose (monthly, quarterly, or annual).



Monthly rental plans



Quarterly rental plans



Annual rental plans

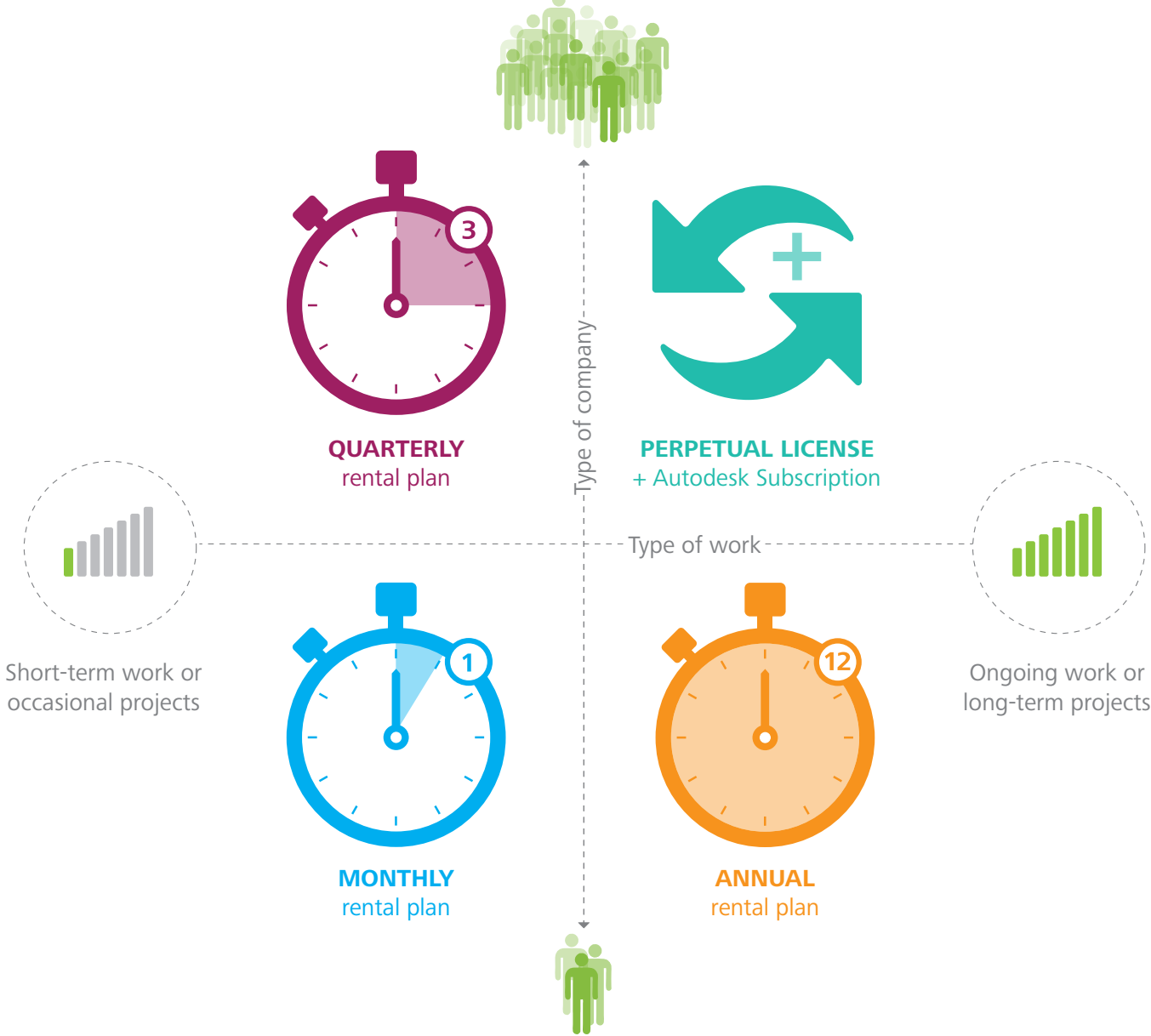
What should I choose?

Before you choose to purchase a perpetual license or a software rental plan, think about the kind of work that you do

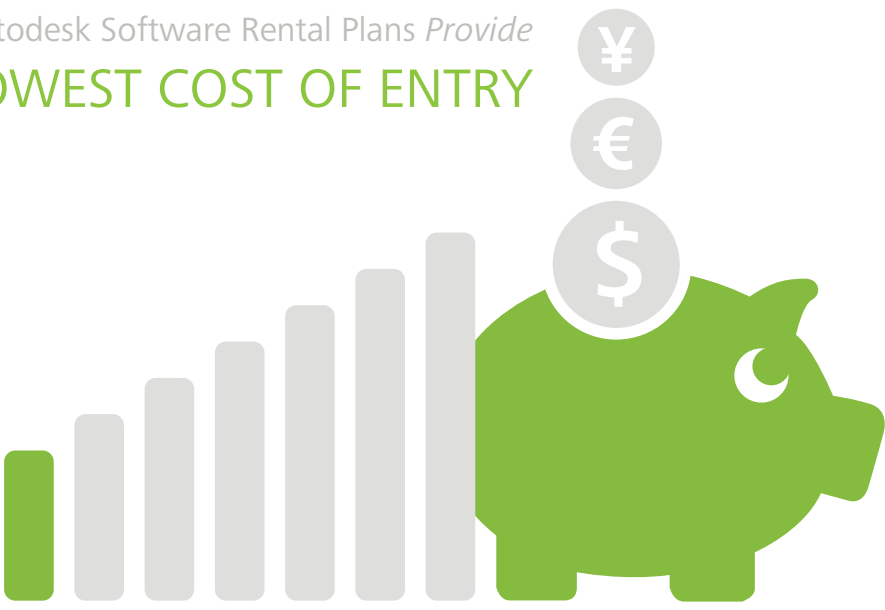


If you work on a project-by-project basis, then the monthly or quarterly rental plans may be your best choice. They require the shortest commitment, making it easier for freelancers and startups on a budget to manage their software expenses. The annual rental plan is the most cost-effective choice for customers working on longer-term projects.

If you require ongoing access to Autodesk software, a perpetual license with Autodesk Subscription may be the most cost-effective choice.



Autodesk Software Rental Plans Provide
LOWEST COST OF ENTRY



Autodesk Software Rental Plans Allow
EASY RAMP UP / SCALE DOWN



Autodesk Software Rental Plans GIVE
ACCESS TO THE LATEST TOOLS



FOR MORE
INFORMATION

➤ autodesk.com/pay-as-you-go